



PERIOD  
HOMES



Bridge Road  
Ongar CM5 0LJ  
Guide Price £650,000-£700,000



## Bridge Road, Ongar, CM5 0LJ

**\*\*Guide Price - £650,000 - £700,000\*\***

Set in the picturesque village of Moreton, this charming Grade II Listed semi-detached residence beautifully fuses period character with modern versatility. Complete with a self-contained annexe, the property offers an ideal living solution for multigenerational families or those seeking additional guest accommodation.

The ground floor welcomes you with a spacious living room featuring a striking character fireplace. This inviting space flows effortlessly into a second reception room, currently used as a study, subtly divided by original beams that showcase the home's historic charm. A separate dining room with its own period fireplace and pantry cupboard offers a cosy setting for family meals and entertaining.

The generously sized kitchen is well-equipped with ample worktop space and storage, and provides direct access to the rear garden. Completing the ground floor is a bright conservatory, accessible via the study, which opens onto the garden and serves as a tranquil retreat for enjoying the outdoors year-round.

Upstairs, the main house features three well-proportioned bedrooms, each enriched with built-in wardrobes and delightful period details. A family bathroom completes the first-floor accommodation, offering both comfort and convenience.

A true highlight of this unique property is the self-contained annexe. With its own private entrance, the annexe comprises an open-plan living area, a fitted kitchen, and a well-appointed bathroom on the ground floor. The first floor hosts two bedrooms and additional storage. The annexe also provides internal access to the property's double garage.

Both the main house and annexe enjoy access to a shared patio and lawned garden—an ideal setting for summer dining or relaxing in the sunshine.













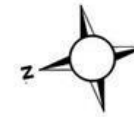


# FORGE COTTAGE, MORETON

Approx. Gross Internal Area 213.3 Sq M ( 2296.2 Sq Ft )

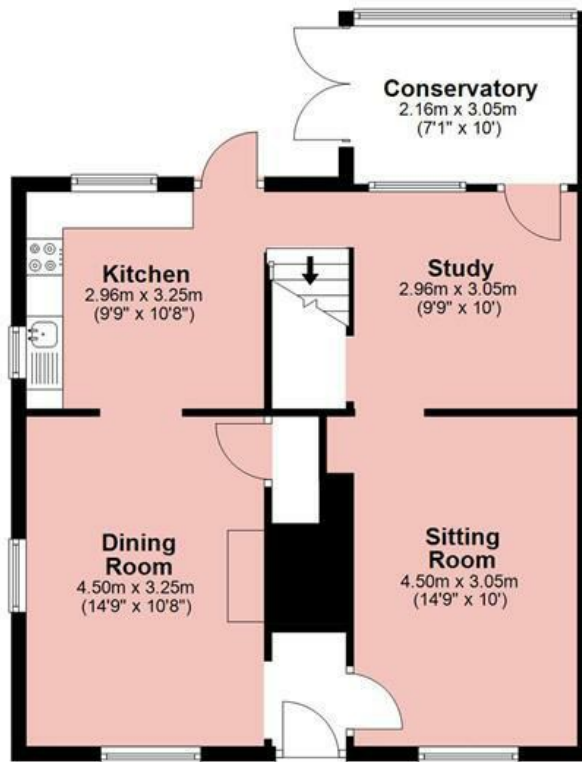


PERIOD  
HOMES



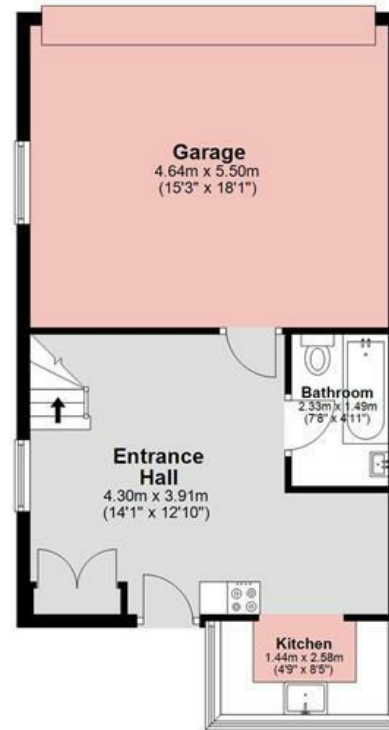
## Ground Floor

Approx. 64.0 sq. metres (688.5 sq. feet)



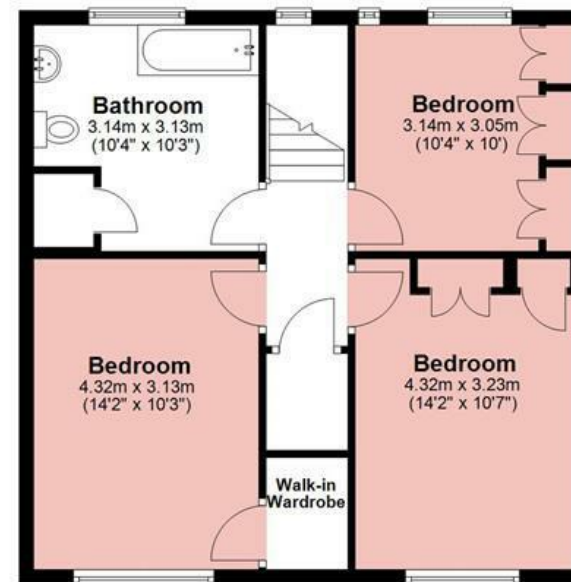
## Annex Ground Floor

Approx. 53.7 sq. metres (577.7 sq. feet)



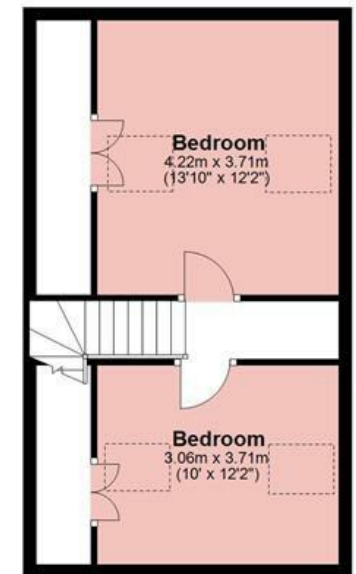
## First Floor

Approx. 56.8 sq. metres (611.3 sq. feet)



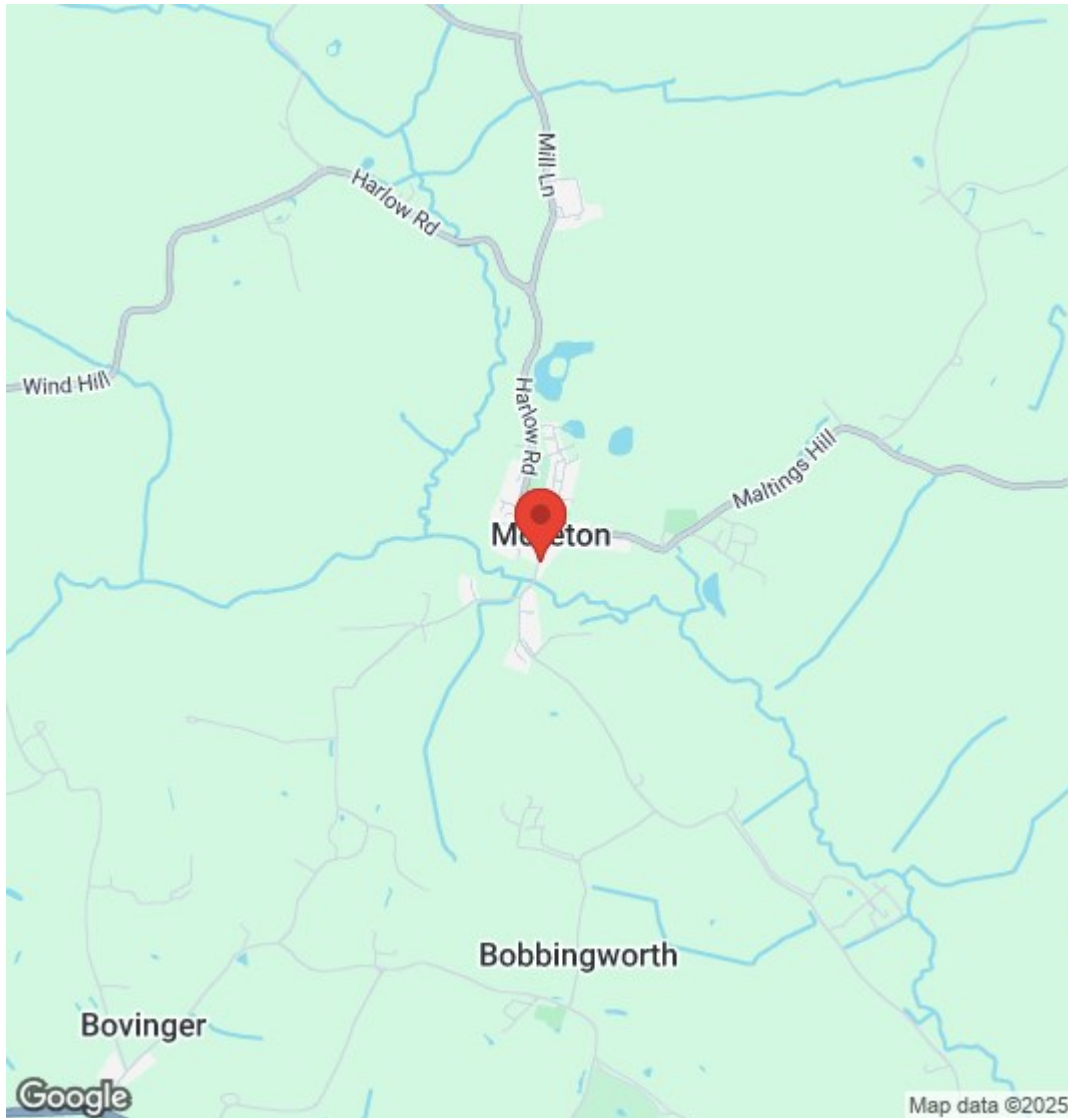
## Annex First Floor

Approx. 38.9 sq. metres (418.8 sq. feet)



Measurements are approximate and for illustration purposes only. While we do not doubt the accuracy and completeness, we advise you conduct a careful independent assessment of the property to determine monetary value.





**PLEASE CALL 01277 288000 TO ARRANGE A VIEWING**  
**[www.periodhomes.co.uk](http://www.periodhomes.co.uk)**

**INDEPENDENT ESTATE AGENTS - VALUATIONS WITH NO OBLIGATION - PROFESSIONAL SERVICE**

These particulars do not constitute any part of an offer or contract. All measurements are given as a guide, no liability can be accepted for any errors arising therefrom. No responsibility is taken for any other error, omission, or mis-statement in these particulars.

Period Homes, a trading style of Walkers Village and Country Homes Limited do not make or give, whether in these particulars, during negotiations or otherwise, any representation whatsoever in relation to this property.



